

Application-Report - RPM monitoring on small water power plants



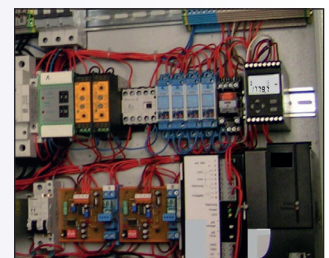
Task:

The rpm relay controls the activating moment of the generator after it has reached the rated speed with the support of the turbine. The second switching value controls the overspeed of the generator with an emergency off in case of power failure.

For this, the rpm relay with its 24V supply voltage is best suited as it can be supplied by the UPS. The control was specially developed for small water power plants as controls for larger ones are much more expensive and would not be worth it for this smaller water power segment.



Rotational speed sensor on the generator



Rotas in the control cabinet

Source: Richter Energietechnik

Solution:

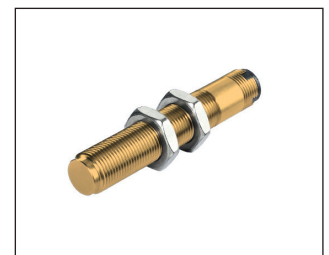
Due to previous experience in operations in similar applications, the decision was made to use the [rotas speed monitor](#). The easily adjustable system for rotational speed monitoring and the robust, resistant and easy to install sensor solution provide the perfect complete solution for the small water power plant.

Convincingly flexible and reliable

The programmable rotational speed monitor can be set up very variably taking various system requirements into consideration. Its functional features make it possible to clearly set an alarm case and record it reliably.



Speed monitor rotas



Speed sensor SDN14.GI04.SB

RHEINTACHO is a flexible, highly efficient partner- wherever speed must be measured, monitored or indicated. Innovation, the most modern production techniques and equipment, meticulous quality control along with a first-class workforce are the corner stones of our company. For the past 114 years, Rheintacho has used his extensive knowledge and experience to developed sensors, systems and customized solution to meet the customer's requirements.